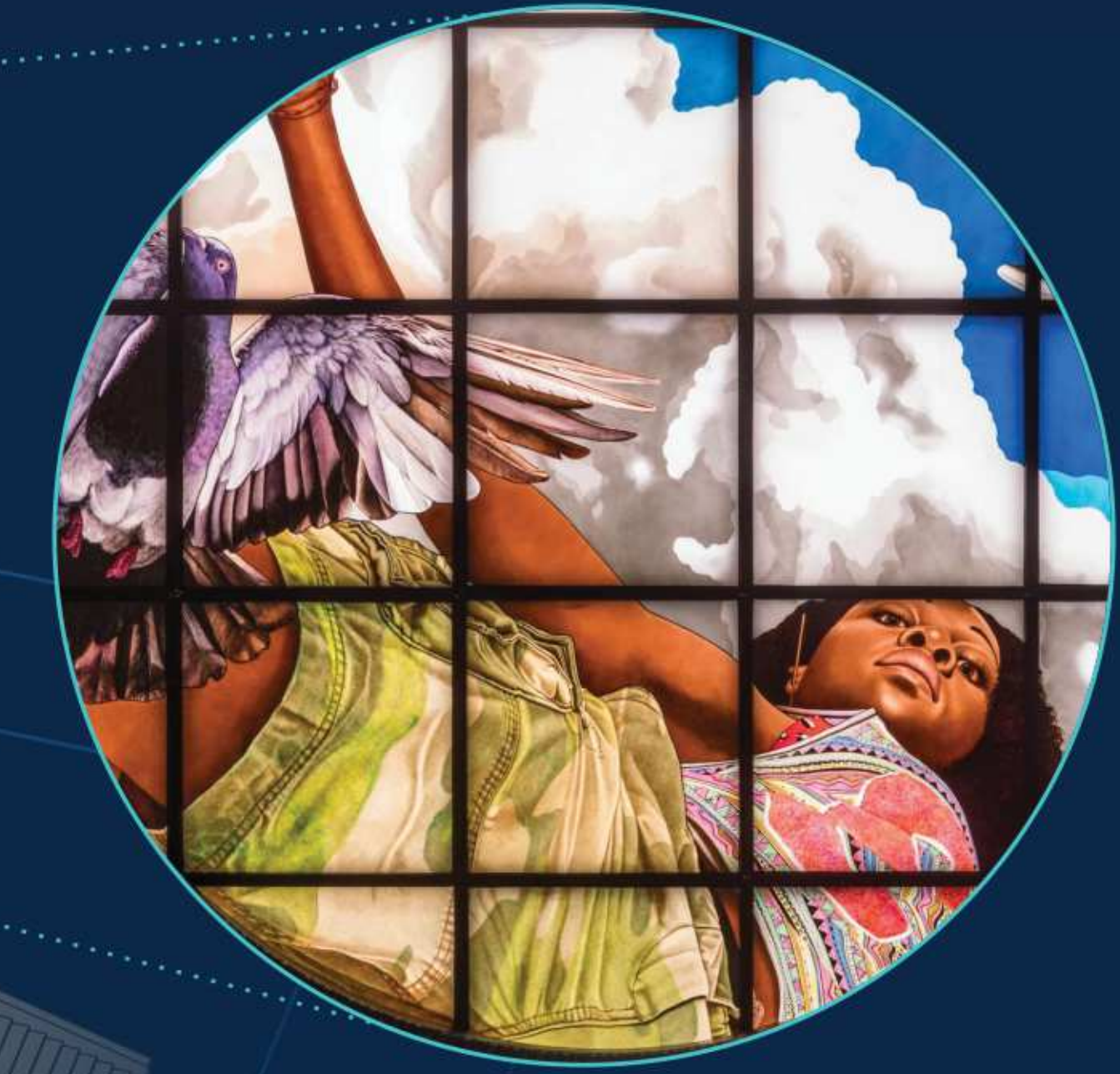


# Map & Directory



**1**  
1st Floor

Metropolitan Lounge  
Post Office  
Shops

Exit to:  
31st Street  
33rd Street  
9th Avenue

**C**  
Concourse

Train Hall  
Amtrak & LIRR Services  
Food Hall  
Ticketed Waiting Room

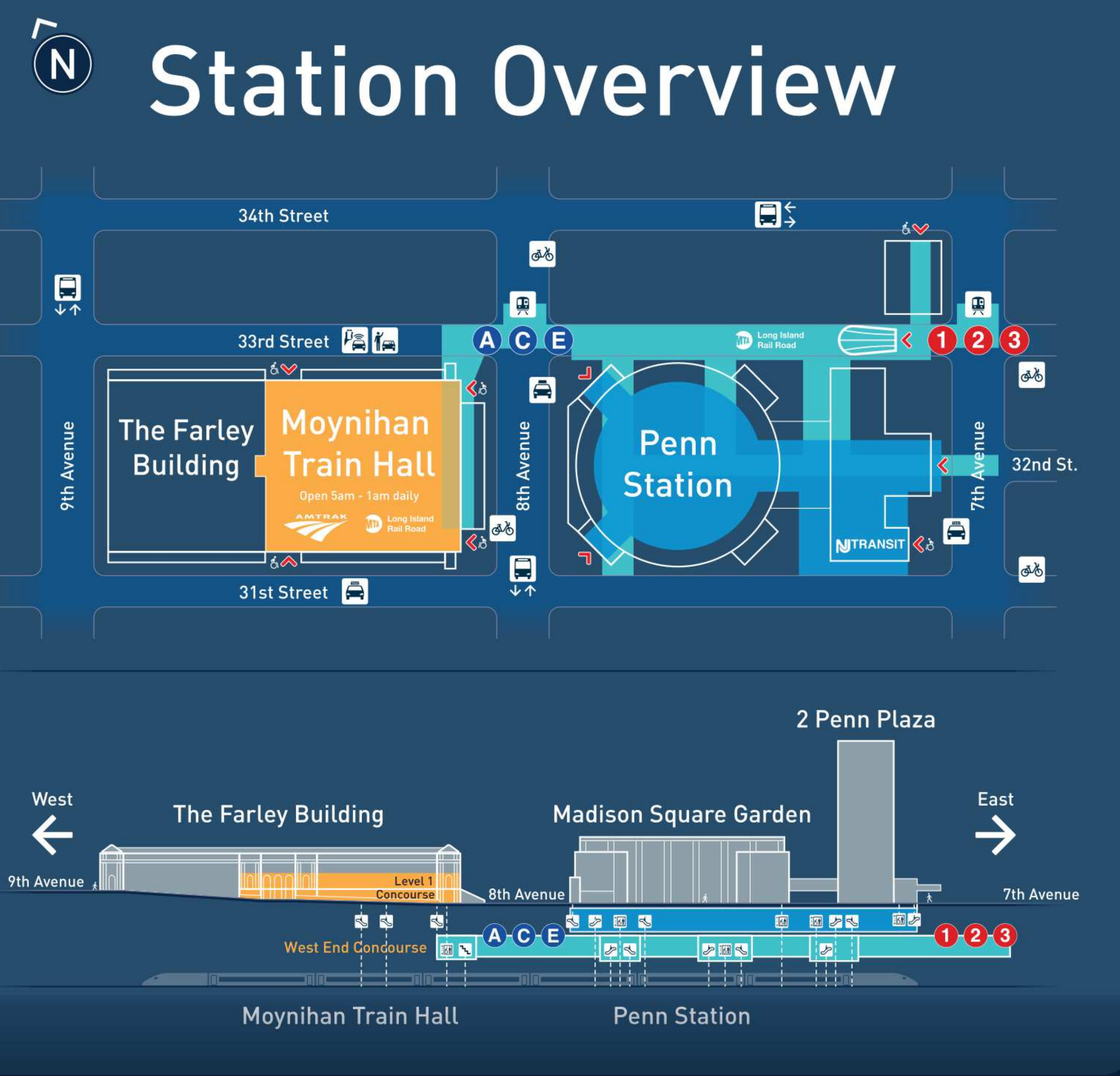
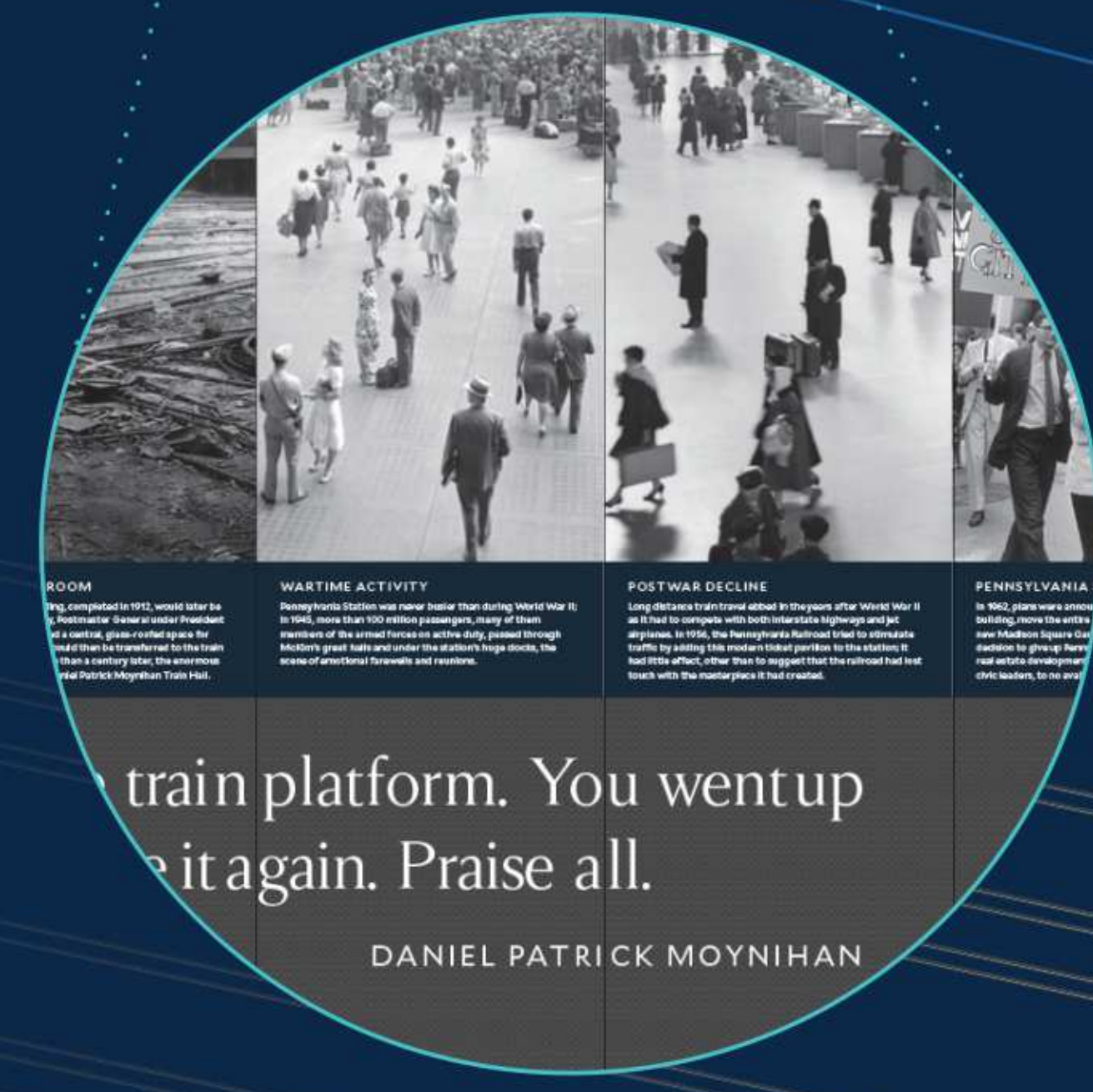
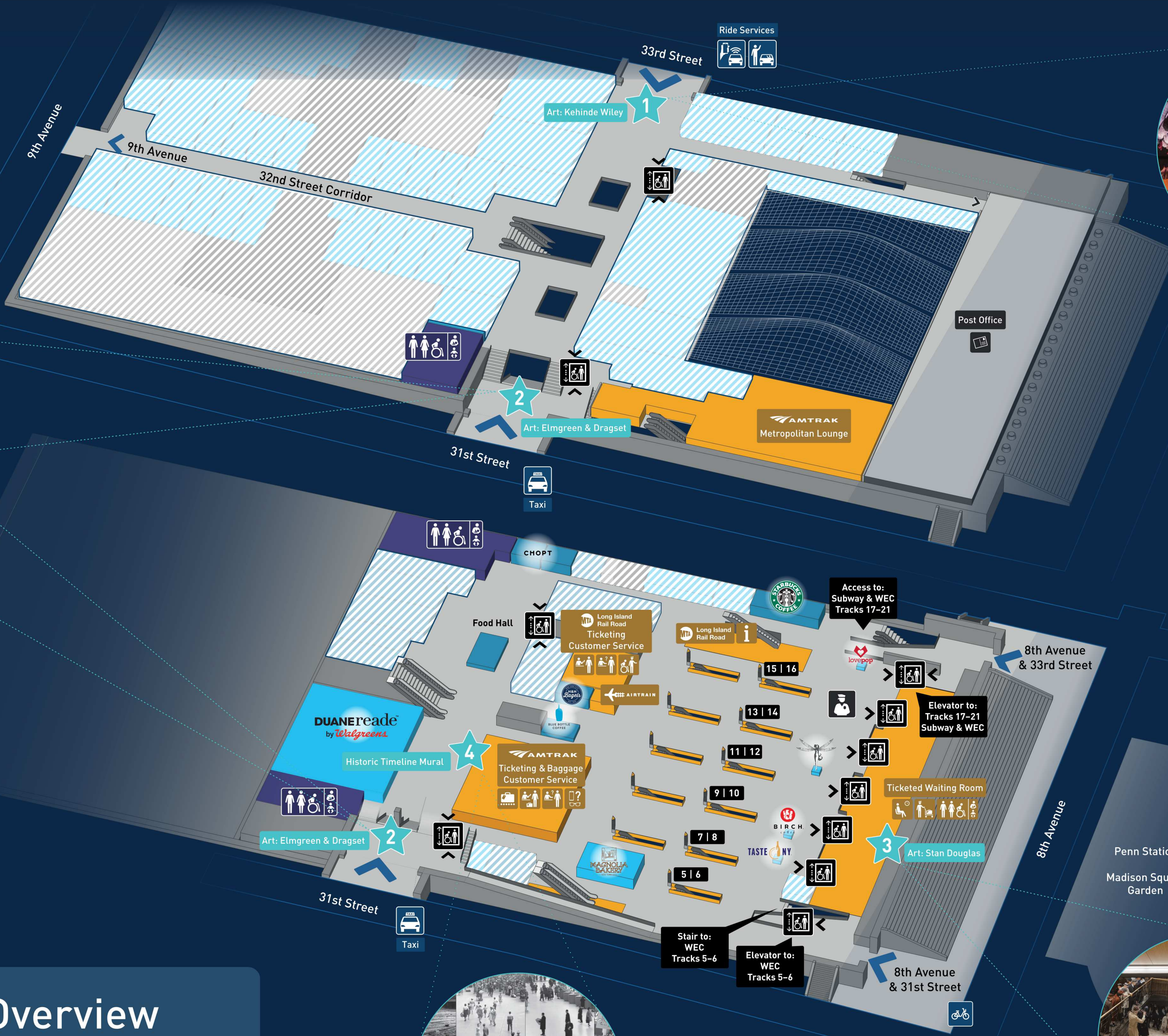
Access to:  
Tracks 5-16

Exit to:  
8th Avenue & 31st Street  
8th Avenue & 33rd Street

**WEC**  
West End Concourse

Access to:  
Tracks 5-21  
Subway A C E

Access to tracks 17-21  
only via the WEC



Amtrak	LIRR	Local Connections	Services	Art & History	Food & Drinks	Shops
<ul style="list-style-type: none"> <li>Baggage Claim</li> <li>Customer Service</li> <li>Lost and Found</li> <li>Metropolitan Lounge</li> <li>Red Cap Services</li> <li>Ticketed Waiting Room</li> <li>Ticketing &amp; Baggage Check-in</li> </ul>	<ul style="list-style-type: none"> <li>Customer Service</li> <li>Information</li> <li>LIRR Care</li> <li>Ticketed Waiting Room</li> <li>Ticketing</li> </ul>	<ul style="list-style-type: none"> <li>Subway A C E 1 2 3</li> <li>Drop-off &amp; Pick-up • 33rd Street</li> <li>Ride Services • 33rd Street</li> <li>Taxi • 31st Street</li> <li>Citi Bike • 8th Ave &amp; 31st Street</li> </ul>	<ul style="list-style-type: none"> <li>Police</li> <li>Post Office</li> <li>Restrooms</li> <li>Baby Changing</li> <li>Nursing Room</li> </ul>	<ul style="list-style-type: none"> <li>Kehinde Wiley, "Go," 2020</li> <li>Elmgreen &amp; Dragset, "The Hive"</li> <li>Stan Douglas, "Penn Station's Half Century," 2020</li> <li>Historic Timeline Mural</li> </ul>	<ul style="list-style-type: none"> <li>Birch Coffee</li> <li>Blue Bottle Coffee</li> <li>Chopt Creative Salad Company</li> <li>H&amp;H Bagels</li> <li>Magnolia Bakery</li> <li>Starbucks</li> <li>Taste NY</li> </ul>	<ul style="list-style-type: none"> <li>Damselfly Flowers</li> <li>Lovepop Cards</li> <li>Duane Reade by Walgreens</li> </ul>

Please note: Moynihan Train Hall is closed between 1-5 AM. For Amtrak & LIRR between 1-5 AM, please use Penn Station.